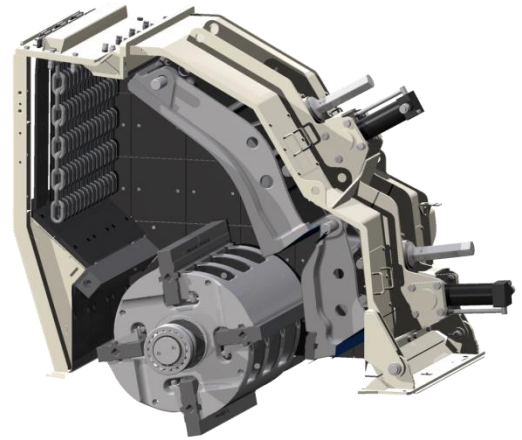
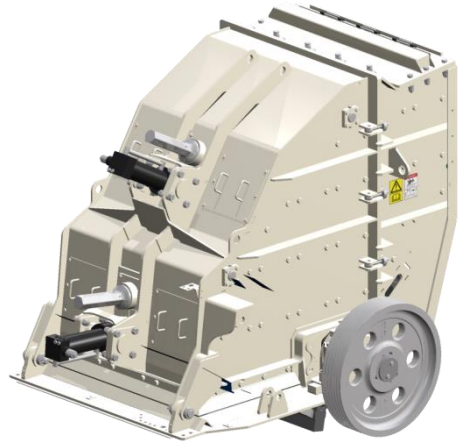


HSI4143 HORIZONTAL SHAFT IMPACTOR



STANDARD FEATURES

- Fabricated from precision structural steel plate. Side walls fully lined with replaceable 500HB wear resistant plates.
- Large unobstructed feed opening.
- Hinged side door allows access to inspect rotor, blowbars & apron tips.
- Complete hinged chamber hood is opened hydraulically to allow access to turn or replace blowbars, as well as apron liner replacement or general maintenance.
- Hydraulic assist apron adjustment allowing for quick apron setting adjustment.
- Patented full hydraulic relief on the aprons.
- Heavy duty 4 bar rotor.
- Double row, self aligning spherical roller bearings on each end of the rotor shaft. Grease lubricated, with inner and outer labyrinth seals.
- Cast steel aprons, fitted with replaceable 500HB plate on the lower tip of the secondary apron.
- Martensitic steel blowbars fitted as standard.
- Rotor can be run as a conventional 4 bar rotor, all 4 blowbars of equal height, in the 2hi 2lo configuration.
- Quick release blowbar wedge lock system.
- Vertical lift blowbar removal.

OPTIONAL EQUIPMENT

- High Chrome Blowbars
- Martensitic Blowbars with ceramic inserts
- Third Apron/Grinding Path
- Chamber mounted gantry with manually operated jib for blowbar removal.
- Fully tiled secondary apron with replaceable 500HB wear resistant plate.

SPECIFICATIONS

Terex® Minerals Processing Systems HSI4143

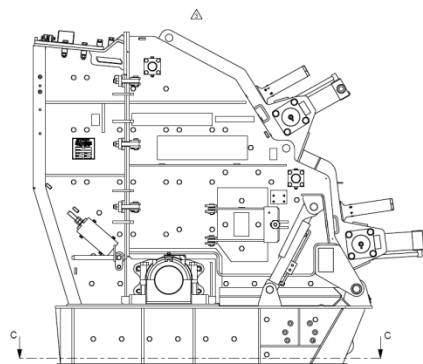
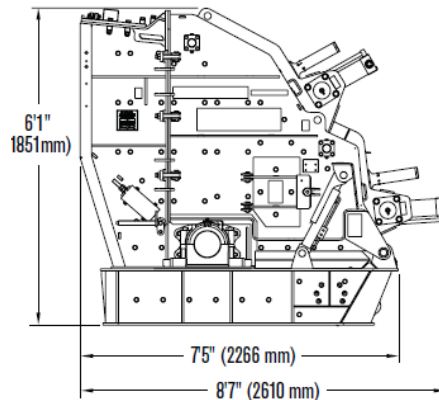
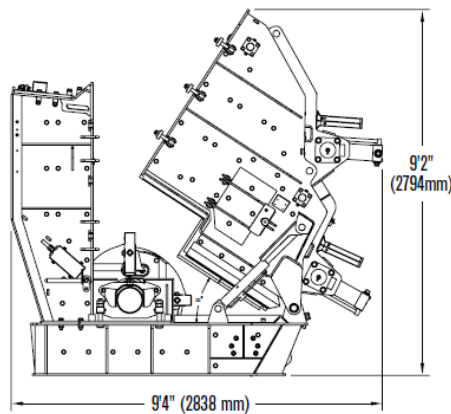
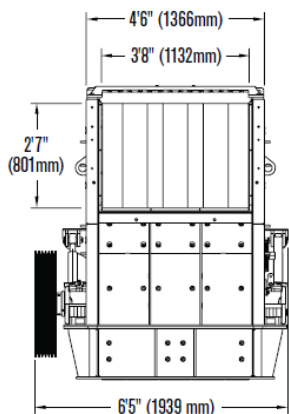
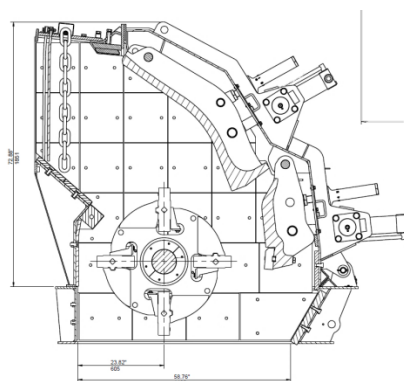
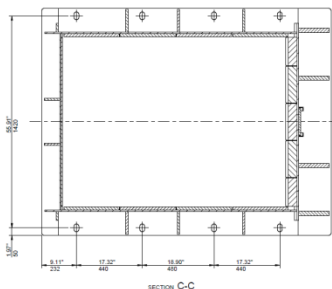


TABLE FOR FOUNDATION LOADING DURING OPERATION

FOUNDATION LOADING	
DIRECTION	VALUE (kN)
VERTICAL	180
HORIZONTAL	18



SPECIFICATIONS

Inlet feed opening.....	31 5/8" x 44 5/8" (802 x 1132 mm)
Discharge opening.....	44 7/8" x 58 3/4" (1140 x 1492 mm)
Maximum recommended feed size*	19 5/8" (500 mm)
Tonnage.....	88-298 TPH (80-270 MTPH)
Horsepower.....	180 hp (132 kW)
Rotor speed.....	500 - 800 RPM
Tip speed.....	5150-8150 ft/min (26 - 42 m/s)
Bearing size.....	150 mm
Rotor diameter.....	40 5/8" (1032 mm)
Rotor width.....	43 1/4" (1100 mm)

Impact bar length.....	43 1/4" (1100 mm)
Impact bar thickness.....	3 1/8" (80 mm)
Apron tip liner size.....	5 7/8" x 43 1/4" (150 x 1100 mm)
Apron tip liner thickness.....	2 3/8" (60 mm)
Side plate liner thickness.....	3/4" (20 mm)
Approximate weights:	

Base unit.....	21914 lbs (9940 kg)
Cast upper "monoblock" apron.....	2683 lbs (1217 kg)
Impact bars (ea.).....	414/483 lbs (188/219 kg)
Lower apron tip liner.....	159 lbs (72 kg)
Side plate liner range.....	15-67 lbs (7-31 kg)

*Depending on feed material, 30 3/4" (780 mm) diagonal dimension,
31 1/2" x 19 5/8" x 9 7/8" (800 x 500 x 250 mm) concrete slab

www.terexmps.com

Effective Date: March 2015. Product specifications and prices are subject to change without notice or obligation. The photographs and/or drawings in this document are for illustrative purposes only. Refer to the appropriate Operator's Manual for instructions on the proper use of this equipment. Failure to follow the appropriate Operator's Manual when using our equipment or failure to act responsibly may result in serious injury or death. The only warranty applicable to our equipment is the standard written warranty applicable to the particular product and sale and Terex makes no other warranty, express or implied. Terex, the Terex Crown design, and Works For You are trademarks of Terex Corporation or its subsidiaries. All rights are reserved. © 2015 Terex Minerals Processing Systems.

Terex® Minerals Processing Systems, 909 17th Street NE, Cedar Rapids, IA 52402 USA
Tel +1 319 363 3511 • Fax +1 319 399 4871 • Email MPSales@terex.com • www.terexmps.com

Form 26548 (3/15) prelim



WORKS FOR YOU.™