

# **TC 621 Heavy Duty Conveyor** **(71ft x 40")**



The TC 621 is a heavy duty stockpiler specifically designed for working after a primary crusher. Typical feed size is up to 250mm (10") material.



## **SPECIFICATION**

- Product up to 250mm (10")
- 1000mm (40") Belting. Heavy Duty
- Optional 1050mm (42") Belting
- 21.9m (71ft) Long conveyor
- Discharge height up to 11m (36ft)
- Hydraulic folding head section
- 127mm (5") Rollers
- Twin Conveyor drive for maximum power

## **ADVANTAGES**

- Reduce fuel consumption by up to 80%
- Eliminate / reduce need for wheel loader
- Eliminate material double handling
- Reduce noise, dust and emissions
- Designed to work after primary crusher
- Higher quality end product
- Includes wear liners, heavy duty belting



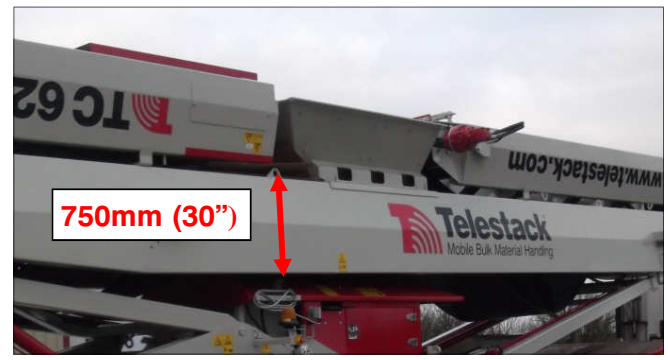
Deutz 4 Cylinder **TURBO D 2011 50Kw (68HP)**



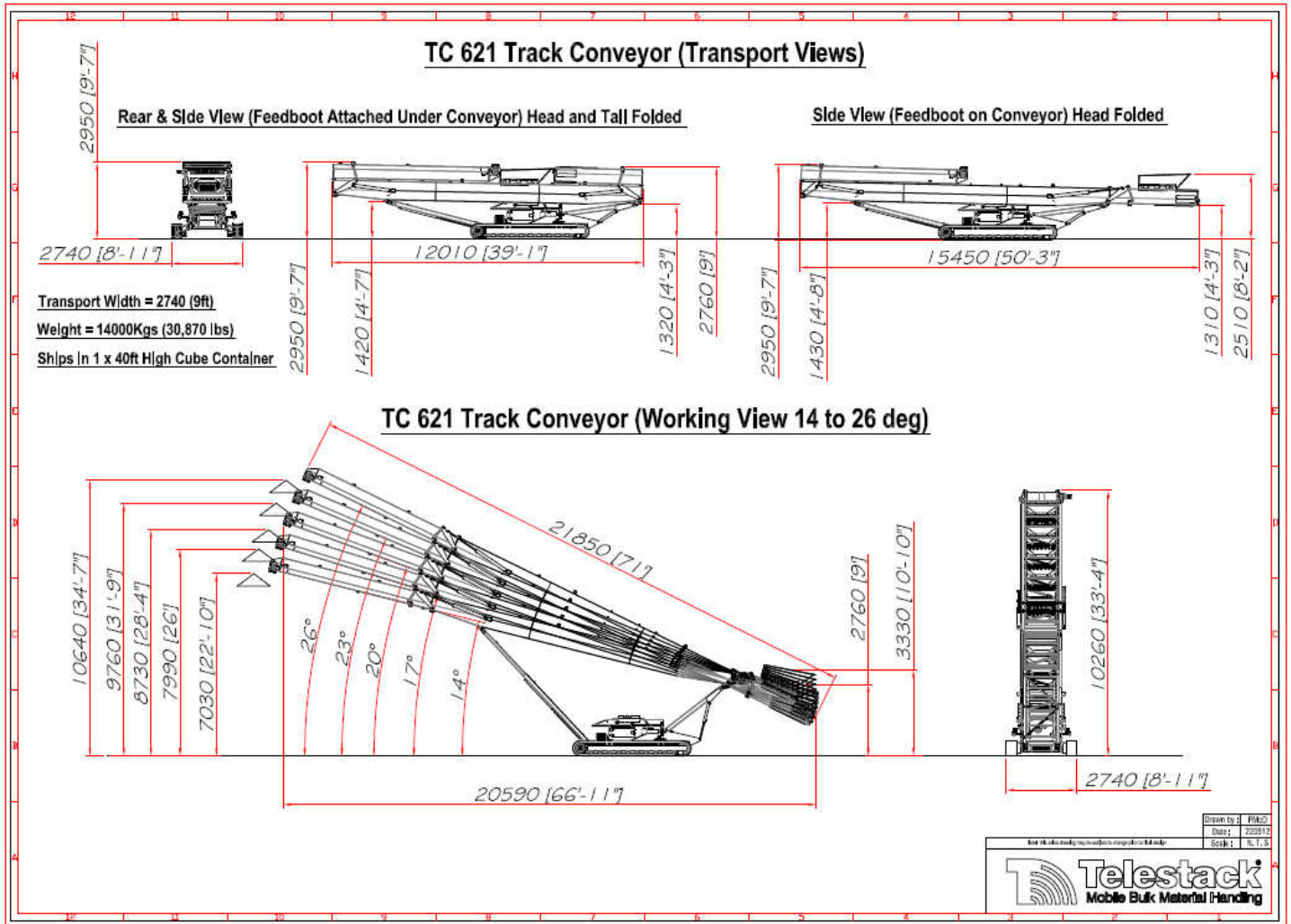
Tracks 4m Centre x 400 shoe (12ft x 20") **Heavy Duty**



Optional Dual Power or All Electric Conveyor



Heavy Duty Mid section for large lump size



Transport on 1 x Low Loader (Ro Ro)

#### Transport Dimensions

Length	12.02m	(39ft 1")
Width	2.70m	(8FT 10")
Height	2.98m	(9ft 8")
Weight	14000kg	30870lbs

### STOCKPILE CAPACITIES

Angle	Stockpile Height (m)	Stockpile Height (ft)	Capacity (m³)	Capacity (Tonne)	Capacity (Yards³)	Capacity (Ton)
14°	7.03	22ft 10"	640	1025	840	1130
17°	7.99	26ft	940	1505	1230	1660
20°	8.73	28ft 4"	1225	1965	1605	2165
23°	9.76	31ft 9"	1715	2745	2245	3025
26°	10.64	34ft 7"	2220	3555	2905	3920

Tonnage based on 1.6 Tonnes/m<sup>3</sup>  
**Typical Maximum single cone stockpile at 26°**

1790m<sup>3</sup> or 2340yards  
 2863 Tonnes or 3150 Ton (USA)

Conveyor can be repositioned to build multiple stockpiles.

#### Distributed by:



#### For Further Information

**Telestack Limited**  
[www.telestack.com](http://www.telestack.com)  
 Tel: +44 (0) 2882 251100  
 Email: [info@telestack.com](mailto:info@telestack.com)

**THE POWER TO MOVE MATERIALS™**