

TC 424R Tracked Radial Conveyor **(80ft x 40")**

 **Telestack**
Mobile Bulk Material Handling



SPECIFICATION

- 1000mm (40") wide belting
- 24 m (80ft) length of conveyor
- Internal hydraulic hub drive (Radial)
- Hydraulic folding head section
- Deutz air cooled 3 cylinder engine
- Heavy duty construction
- Typical product 0 - 125mm (0 - 5")
- Ships on 1 x lowloader or 40ft 'High cube' (12m) container
- Up to 19,395 tonne (15,855 yrds) stockpile @ 180°



1.8 metre (6ft) crawler track mounted unit



Diesel hydraulic engine (Optional Dual Power)

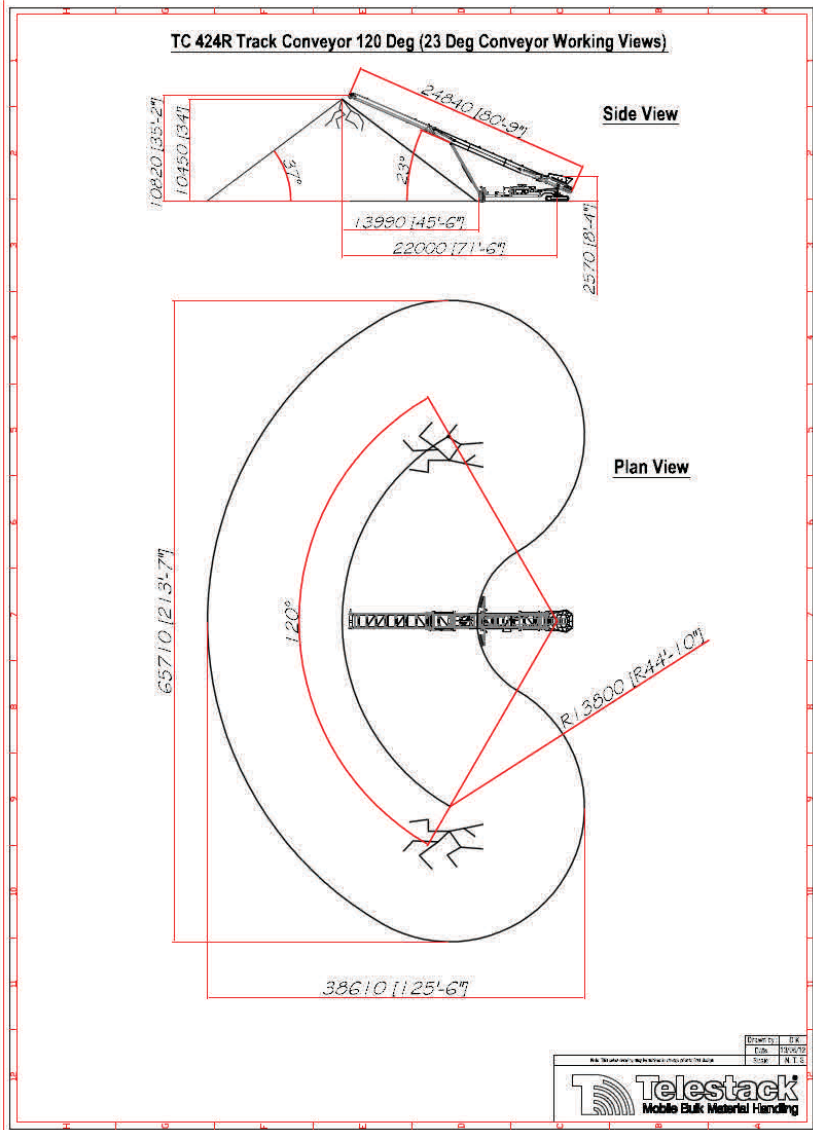


Internal hydraulic radial wheel drive (Radial movement)



Hexagonal feed-boot - 2.39m x 2.22m (7'9" x 7'3")

TC 424R Tracked Radial Conveyor (80ft x 40")



23 Degrees Working Angle

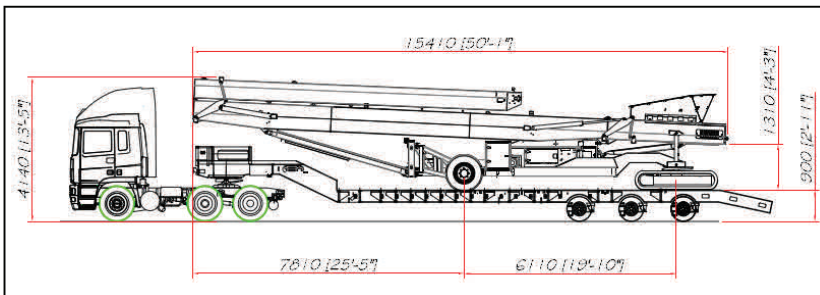
Radial Angle	Capacity (m ³)	Capacity Tonne	Capacity (Yards ³)	Capacity (Ton)
0°	2105	3370	2755	3710
90°	7115	11380	9305	12545
120°	8780	14050	11485	15490
180°	12120	19395	15855	21375

ADVANTAGES

- Reduce fuel consumption up to 80%
- Eliminate / reduce need for wheel loader
- Eliminate double handling of material
- Reduce noise, dust and emissions
- Self powered radial travel stockpiling - Radio remote control as standard
- Optional dual power (Electric driven belts)
- Upgrade to 600TPH (TC 621R)



Transport Mode - 1 x Low Loader (RO -



Transport Mode - 1 x Low Loader (RO - RO)



Packed into 1 x 40ft 'HC' Container

Distributed by:

For Further Information

Telestack Limited

www.telestack.com

Tel: +44 (0) 2882 251100

Email: sales@telestack.com

**THE
POWER
TO MOVE
MATERIALS™**