



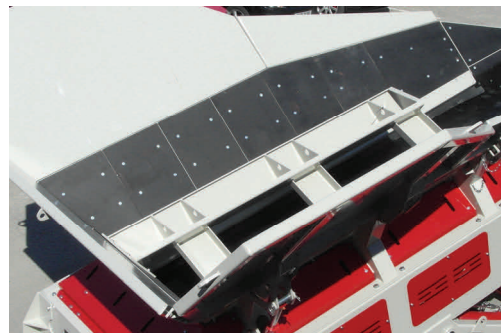
- Heavy duty 4.0 metre (12ft) tracks for site movement
- 1200mm (48") wide belt feeder
- 1200mm (48") wide incline belt—20 metre (65ft) length conveyor
- Heavy duty chassis
- Full impact bed at feed point
- CAT 75.4 kw Diesel hydraulic engine for tracks and conveyor belts (Optional dual power)
- Manual and optional hydraulic folding hopper sides
- Hydraulic raise/lower incline conveyor



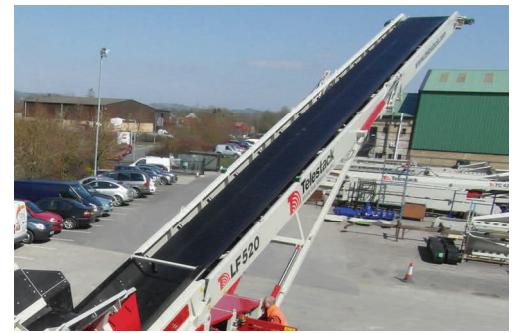
Rear fed belt feeder (Optional apron steel feeder)



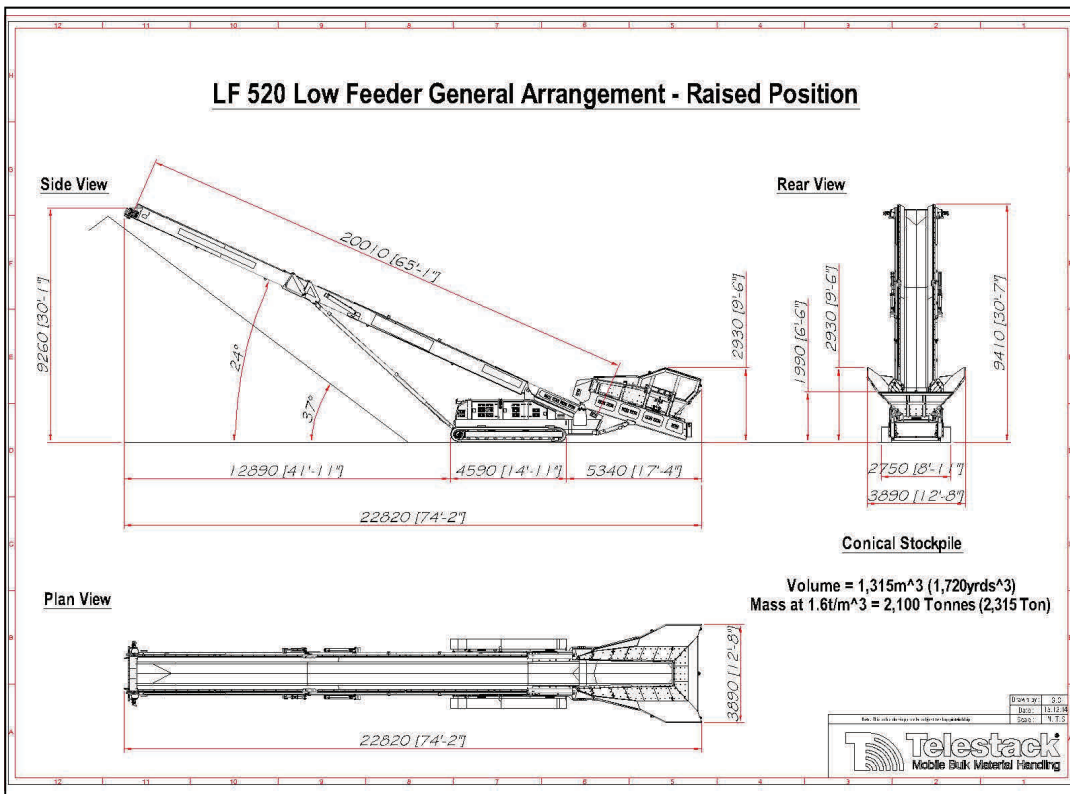
4.0metre (12ft) - 400 Shoe Tracks



Hopper with optional bolt-in liners

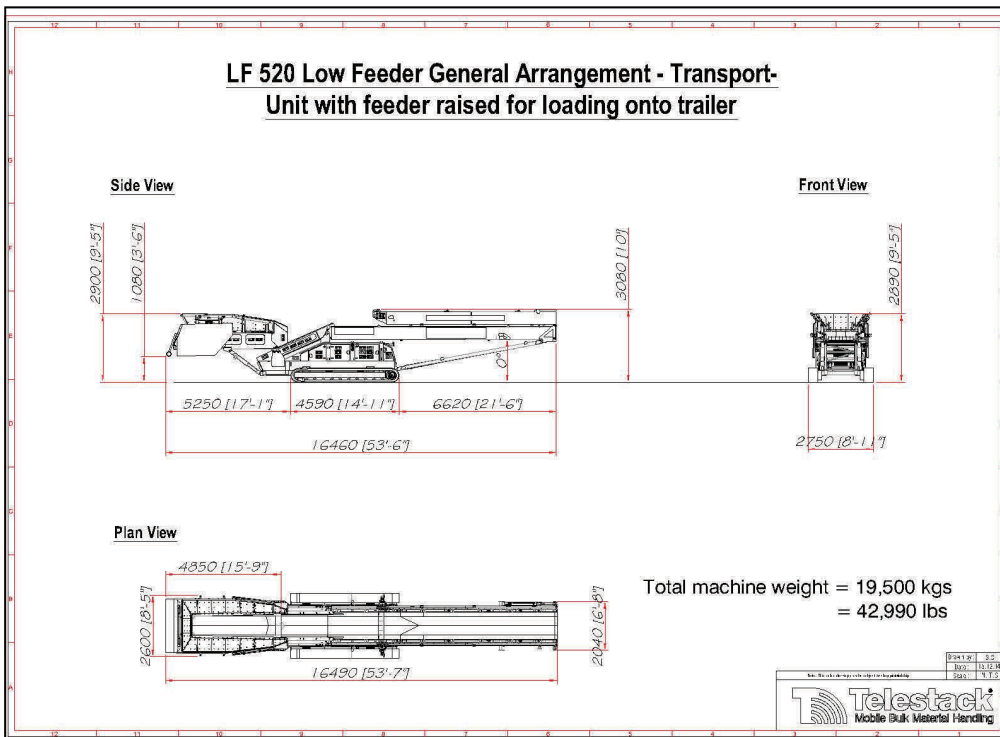


Folded Plate - 20 metre (65ft) Incline conveyor



### KEY BENEFITS

- Low rear side for feeding with loaders / excavators.
- Feed from 3 sides.
- Multifunctional unit for stockpiling, feeding Telestack equipment, barge-loading and reclaiming
- Unload directly from wheel loaders/grabs
- Hopper feeder for medium to large wheel loaders
- Eliminate double handling of material.
- Fully mobile independent unit with optional dual power - Electric motor driven.



### TYPICAL APPLICATIONS

- Stockpiling directly from wheel loaders/grabs/ excavators.
- Building stockpile in warehouses.
- Loading vessels / barges from wheel loaders or grab cranes.
- Feeding auxiliary Telestack equipment
- Feeding fixed equipment
- Discharging onto overland conveyor systems
- Mobile Reclaim hopper for stacker/reclaimer belt
- Stockpiling after Crushers / screens