

**GREATER REACH.
HIGHER LOAD CAPACITY.
HIGHER SPEEDS.**



Flexibility and speed are the key to success in the recycling business. That's why smart professionals rely on TWH226. Convenient handling, the greatest power, high lifting capacities throughout the entire working range, ergonomic, straightforward operation in the vertically movable cab and legendary reliability make you ready for any challenge!

TWH226

Even heavy recycling loads requiring precise handling within a specific work radius are easily dealt with using the mobile material handler, TWH226.

The particularly solid undercarriage, ensures stability when heavy tonne-loads are to be handled, utilizing a reach of up to 10.7 meters. So that in such situations neither speed nor precision is compromised, slewing motors and slewing gears are minutely adjusted and the lifting and stick cylinders equipped with special end-position damping.

The TWH226 uses state-of-the-art engine and cooling technology. The divided cooling system, comprising a hydrostatically driven fan for the oil cooler and a viscous-clutch driven fan for the water and charge air cooler, provides superior, silent cooling and permits operation of the machine at temperatures as high as 50°C. Options such as particulate filters or a sealed cab equipped with a protective ventilation system are provided to facilitate operation in the sorting hall.

The clean and quiet 115 kW EEC IV-compliant turbo diesel engine conforms to exhaust emission standards stipulated for Tier IV engines (EU Stage IIIB/ EPA Tier 4 interim) and when used in an indoor setting produces only minimal noise pollution and emissions. Ergonomics and occupational safety

are central to the Terex® Environmental Equipment perspective. Optimal visibility is afforded both by the lifting cab with its panoramic windows and by the state-of-the-art function monitor, which permits

comprehensive surveillance of all operating data. Ergonomically arranged operational controls and a comfortable seat that provides lumbar support are components of the basic equipment.



Key Features



Powerful performance

- Turbo-charged Deutz engine 115kW
- Low noise levels during operation
- Optimum performance utilization in every speed range
- Low emission, meeting latest standards



Fatigue-proof working

- Ergonomically designed, well planned interior
- Comfortable orthopedically supportive air cushioned seat
- Intuitive machine controls – simple-to-operate joystick, direct access to key functions



Better view as standard

- Standard equipment: the rear-view camera provides a wide-angle view of the area behind the machine



Everything at a glance

- Large, easy to scan color-display
- Servicing and maintenance made easier via rapid screening of all operationally relevant data
- Comfortable user-interface with intuitively understandable symbols and simple text messages



Constant cooling

- The cooling system with two physically separated radiators keeps the operating temperature of the machine, especially at high ambient temperatures, at an ideal level
- The radiators are designed for easy maintenance and are quick and safe to clean



Running smoothly

- The automatic central lubrication system on the uppercarriage ensures that the loading equipment and slewing ring are evenly supplied with a predefined quantity of lubricant at precisely determined intervals
- This improves the productivity of the machines, reduces repair and replacement part costs as a result of lubrication related bearing failure, and most of all reduces costly service downtimes



Technical Data

Service weight without attachments

TWH226	24–26.7 t
---------------	-----------

Diesel engine

Manufacturer / model	Deutz TCD 4.1 L4
Design	4-cylinder in-line engine
Control	EEC IV
Method of operation	4-cycle diesel, common rail open-combustion-chamber injection, turbocharger with charge cooler
Engine output	115 kW
Rated speed	2000 rpm
Displacement	4.1 l
Cooling system	Water and charge air cooling with temperature controlled fan speed
Emission standard	EPA Tier 4 interim / EU Stage IIIB
Air filter type	Two-stage filter with safety valve
Useable tank capacity	300 l

Electrical system

Operating voltage	24 V
Battery	2 × 12 V / 110 Ah / 750 A (according to EN)
Lighting system	1 × H3 headlamp on uppercarriage, 1 × H3 headlamp on cab floor, rear marker lights and flashers

Transmission

Travel speed 1st gear	max. 5 km/h
Travel speed 2nd gear	max. 20 km/h
Gradeability	max. 45 %
Turning radius	7.0 m

Slewing gear

Slew ring	Internally geared, double-row ball turning ring
Drive	2-stage planetary gear with integrated multi-disc brake
Uppercarriage swing speed	0–8 rpm variable
Rotating interlock	electrically activated
Max. torque	49 kNm

Undercarriage

Front axle	Planetary drive axle with integrated drum brake, rigidly mounted, max. steering angle: 27°, width ca. 2.700 mm
Rear axle	Oscillating planetary drive rear axle with integrated drum brake and selectable oscillating lock, width ca. 2.700 mm
Outrigger	4-point outrigger
Tires	Solid rubber, elastic tires 8x 10.00-20

Brakes

Service brake	A hydraulically activated single-circuit brake system that works on all four pairs of wheels
Parking brake	Electrically activated disc brake on the travel drive that works on both axes

Hydraulic system

Pump capacity	max. 380 l/min
Operating pressure	max. 320 bar
Hydraulic fluid tank	305 l

Operator's cab

Elastic bearings, variable hydraulic height adjustment up to a viewing height of 5.30 m, sound suppressed, large thermal glass windows provide excellent visibility, front windshield with pull-down sunblind that can be slid under the cab roof, inspection window in the cab roof, sliding glass panel in the cab door, steering column tilts and height adjusts.

Heating	Hot water heating with variable temperature adjustment and 3-level blower, 6 adjustable defroster nozzles
Driver's seat	Air-cushioned comfort seat with integrated headrest, safety belt and lower lumbar support, with integrated air conditioning. Multi adjustable seat provides comfortable operation and access to controls.
Monitoring	Ergonomically positioned, glare resistant instrument cluster, multifunction display, automatic monitoring and saving functions for deviating operating conditions (e.g. all hydraulic oil filters, oil temperature indicator, coolant temperature and charge air cooler, coolant level, loading diesel particle filter), optic and audible warning until the pilot control is shut down or the engine power is reduced. Diagnostics for the individual sensors via the multifunction display Rear view camera
Air conditioning system	With automatic temperature control and cooled storage rack.
Sound Power Level	$L_{W(A)} = 101$ dB(A) (guaranteed) in accordance with guideline 2000/14/EC, required in accordance with 2000/14/EC = 104 dB(A)

Official homologation

Certification in accordance with CE guidelines.

Specification subject to change without notice.

Equipment

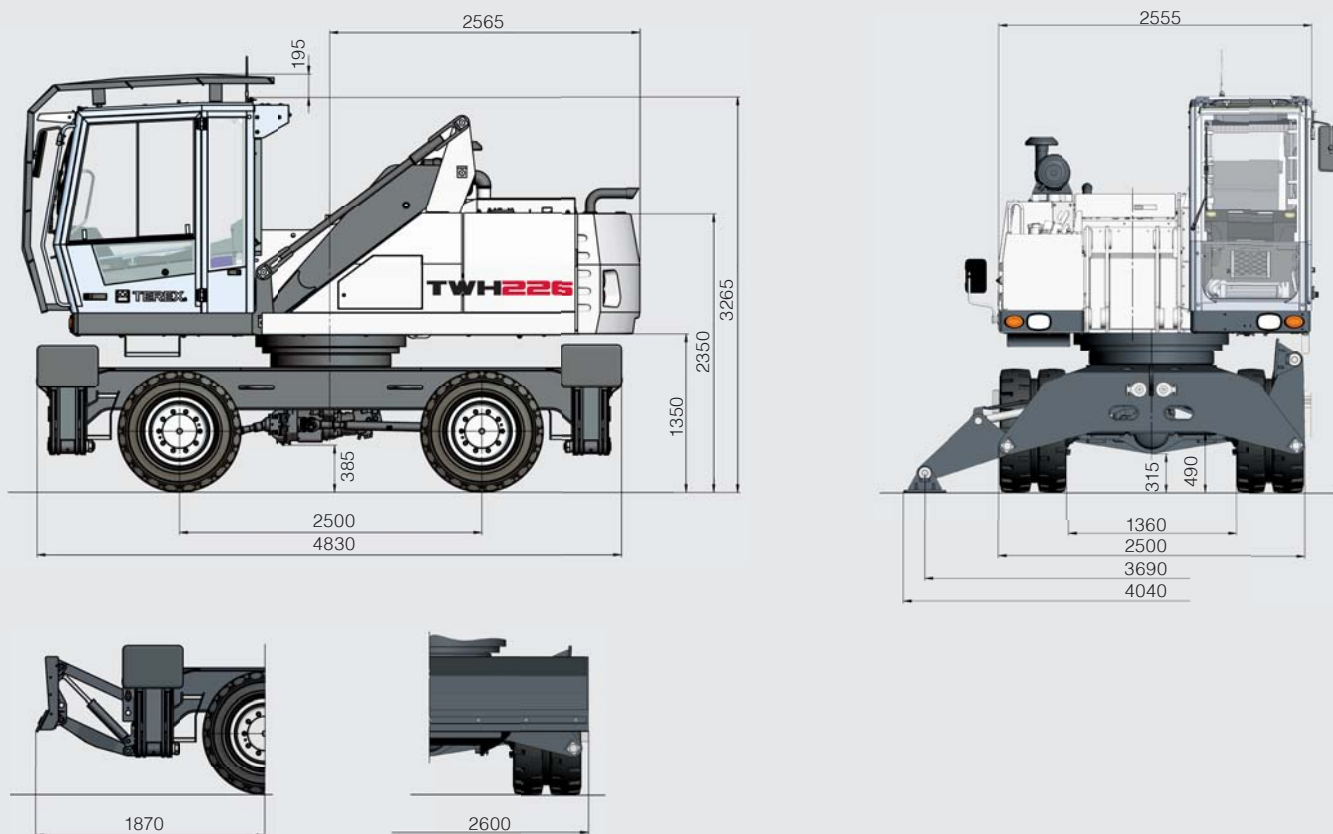
Diesel engine	Standard	Option
Turbocharger	●	
Charge Air Cooler	●	
Electronic direct fuel injection / Common Rail	●	
Auto-idling system	●	
Engine diagnostics interface	●	
Temperature controlled fan drive	●	
Mode switchover (Eco-, Eco+ -, Power-Mode)	●	
Undercarriage		
2 speed power shift gear	●	
4-point outrigger	●	
Outrigger cylinder with integrated shut-off valves on both sides	●	
Cyclone prefilter		●
4-wheel drive	●	
Piston rod protection for the outrigger cylinders	●	
Stabilizer plates 500 × 350 mm	●	
Pendulum axle locking rear axles	●	
Drum brakes	●	
Tires mudguard		●
Tool box	●	
Uppercarriage		
Maintenance bonnet, activated by gas with mechanical fuse	●	
Lockable cleaning access openings on radiators	●	
Divided cooling system for an ambient temperature of up to 50°C	●	
Separate oil cooler with temperature controlled fan drive	●	
Central lubrication system, automatic	●	
Rearview backup camera	●	
Travel alarm		●
Quick-drain valve on the diesel tank	●	
Quick-drain valve on the hydraulic oil tank	●	
Quick-drain valve on the water cooler	●	
Quick-drain valve on the engine sump	●	
Reversing fan for engine and hydraulic oil cooler		●

Cab	Standard	Option
Dust protection device for cabin		●
Height adjustable for cab system	●	
3-layer glass with protection film	●	
Front windshield, slidable	●	
Sliding window in the cab door	●	
Hinged roof opening	●	
Washer and wiper system	●	
Air-cushioned driver's seat with headrest, safety belt, and lower lumbar support	●	
Tilting and adjustable steering column	●	
Air conditioning system	●	
Multifunction display	●	
Document clip	●	
Radio 24 V (CD & USB)		●
Powder fire extinguisher in cab		●
Other equipment		
Close-range expansion for dipper stick	●	
Level controller for coolant and hydraulic oil level	●	
Rupture valves for lift cylinders		●
Rupture valves for dipperstick cylinders		●
Overload warning device		●
Quick coupling on the dipperstick	●	
Lubrication of the grab suspension by the central lubrication system	●	
LED light packages		●

Further optional equipment available on request!
Specification subject to change without notice.

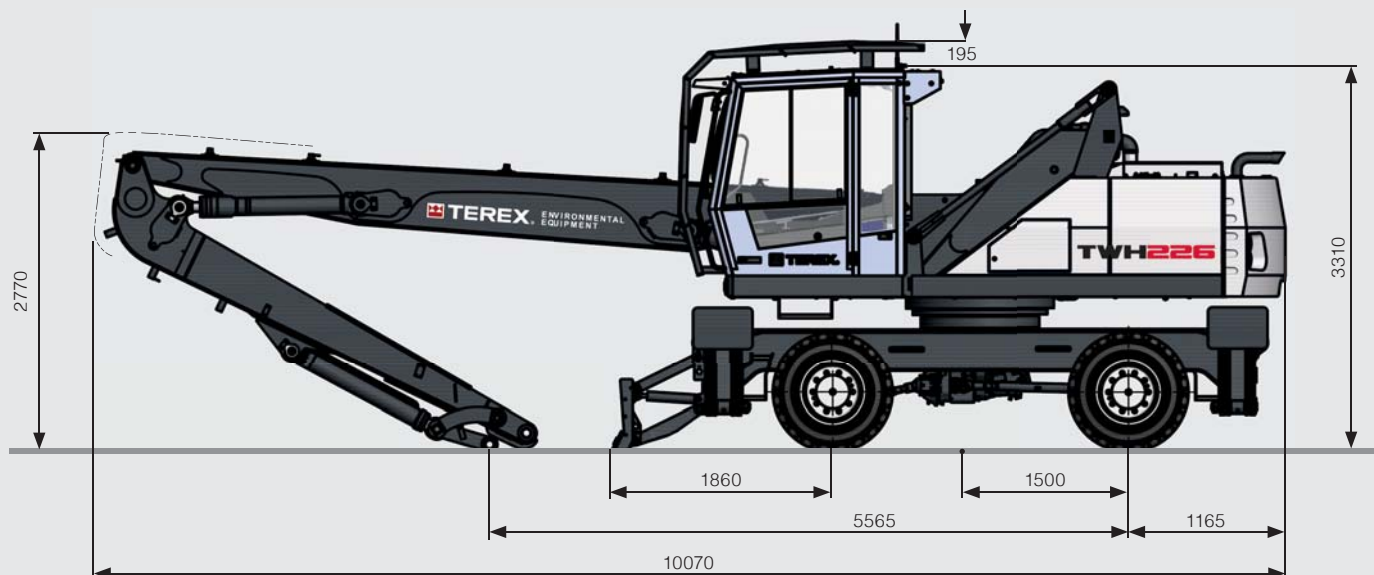
Dimensions

(all dimensions in mm)



Transport Dimensions

(all dimensions in mm)



Working Ranges and Load Capacities

10.7 m reach with multi-purpose stick

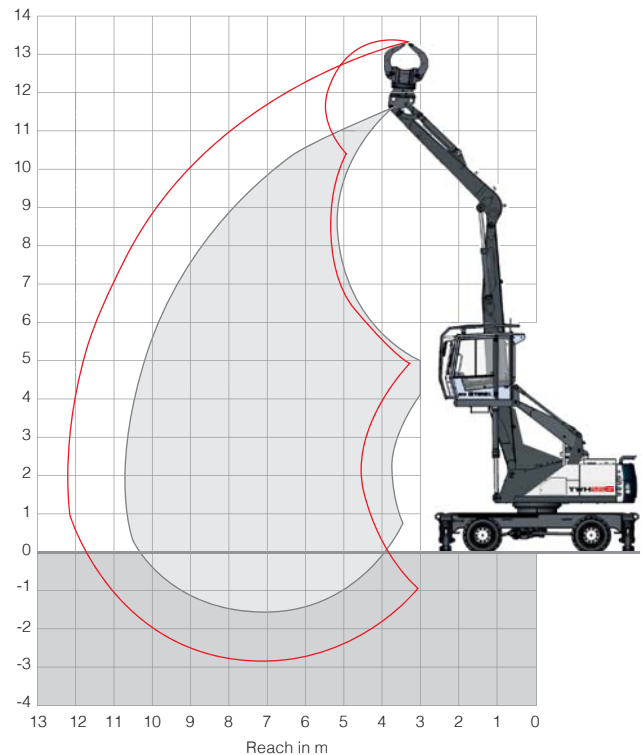
Loading equipment

Boom: 6.5 m

Multi-purpose stick: 4.0 m

Sorting grab

The lift capacity values are stated in metric tons (t). The pump pressure is 360 bar. In accordance with ISO 10567 the lift capacity values represents 75% of the static tipping loads or 87% of the hydraulic lifting force (marked °). On solid and level ground the values apply to a swing range of 360°. The (...) values apply in the longitudinal direction of the undercarriage. The values for "not supported" only apply via the steering axle or the locked oscillating axle. The weights of the attached load hoisting equipment (grab, load hook, etc.) must be deducted from the lift capacity values. The working load of the lifting device must be observed. In accordance with the EN 474-5 for object handling application hose rupture valves on the boom and stick cylinders, an overload warning device and the lift capacity table in the cab are required. For object handling application the machine has to be supported on a level ground.



Height [m]	Undercarriage outrigger	Reach [m]				
		4.5	6	7.5	9	10.5
10.5	not supported		(5.0°)			
	4-point supported		5.0° (5.0°)			
9	not supported		(6.0)	(4.1)		
	4-point supported		6.4° (6.4°)	5.1° (5.1°)		
7.5	not supported		(5.9)	(4.1)	(2.9)	
	4-point supported		6.4° (6.4°)	5.8° (5.8°)	4.1° (4.1°)	
6	not supported	(8.3°)	(5.8)	(4.0)	(2.9)	
	4-point supported	8.3° (8.3°)	6.9° (6.9°)	5.9° (5.9°)	4.7 (5.8°)	
4.5	not supported	(8.6)	(5.5)	(3.8)	(2.9)	
	4-point supported	10.0° (10.0°)	7.6° (7.6°)	6.1 (6.3°)	4.6 (5.5°)	
3	not supported	(7.9)	(5.1)	(3.7)	(2.8)	(2.2)
	4-point supported	12.0° (12.0°)	8.5 (8.5°)	5.9 (6.8°)	4.5 (5.7)	3.5 (4.4)
1.5	not supported	(7.3)	(4.8)	(3.5)	(2.7)	(2.1)
	4-point supported	7.4° (7.4°)	8.1 (9.2°)	5.8 (7.1°)	4.4 (5.6)	3.5 (4.4)
0	not supported	(6.3°)	(4.6)	(3.4)	(2.6)	
	4-point supported	6.3° (6.3°)	7.9 (9.4°)	5.6 (7.2)	4.3 (5.5)	
-1.5	not supported			(3.3)		
	4-point supported			5.6 (6.9°)		
						Max. reach 10.7 m
2.1	not supported					(2.1)
	4-point supported					3.4 (4.0°)