



GREATER MOBILITY AND MORE FLEXIBILITY

Robustness does not necessarily have to do with size, this states the compact and very agile TWH215. It is the uncompromising response to the ever increasing demands of the recycling industry.

TWH215



Key Features



Deutz diesel engine with 85 kW power

- Increased performance with lower fuel consumption – this combination pays off
- The diesel particle filter (DPF) fitted as standard is state of the art and provides a significantly improved working environment, which benefits both on-site personnel as well as the environment



Transmission shaft protection kit

- Metal protection kit for both transmission shafts
- Avoids loose material being wrapped
- Protection against blocking of transmission shaft



Reversing camera and travel alarm

- Standard camera (with night vision function) offers significant advantages for safety and comfort
- The travel alarm warns people close to the vehicle with an acoustic signal; it is activated automatically once the machine starts to drive



Tail radius

- The tail radius is smaller than the support area which reduces the danger of collisions



For inside and outside, efficient and agile

TWH215 is the smallest material handling machine within the recycling industry which meets the challenges and conditions that exist in the recycling sector.

In spite of its compact design, the TWH215 offers operators an excellent viewing level. The cab can be raised hydraulically to a viewing level of 5.20m. This gives operators an unrivalled view into shredders and containers. In order to accommodate the typically diverse conditions in the recycling sector, Terex® Environmental Equipment offers modular design system. Starting

with the standard superstructure, the loading system and undercarriage can be combined or extended as required. For the undercarriage, the following configurations are available: 4-point stabilizers or 2-point stabilizers with support blade. This enables the TWH215 to adapt to individual requirements on site both reliably and precisely. Low fuel consumption and long service intervals mean running costs are kept to affordable levels. These technical benefits, together with an attractive price, make the TWH215 a top material handler for recycling, with an outstanding price / performance ratio.



High performance cooling system

- The optional cooling system with two physically separated radiators keeps the operating temperature of the machine at an ideal level – an important feature in recycling sheds with high dust loads. The radiators are designed for easy maintenance and are quick and safe to clean.



Reinforced tires

- The tires, specifically tailored to the TWH215, feature exceptionally rigid side walls for additional stability – even when operating without static supports

Technical Data

Service weight without attachments

TWH215	14.0–15.5 t
---------------	-------------

Diesel engine

Manufacturer and model	Deutz TCD3.6 L4 with DPF
Design	4-cylinder in-line engine
Type	4 stroke. common rail injection
Engine power	85 kW (116 HP)
Nominal speed	2.000 rpm
Displacement	3.6 l
Cooling System	Water cooled
Exhaust gas standard	COM III B/ EPA Tier IV interim
Air filter design	Two-stage filter with safety cartridge and pre-separator with discharge valve
Usable tank capacity	240 l

Electrical system

Alternator	14 V / 95 Ah
Starter	12 V / 3.1 kW
Operating voltage	12 V
Battery	12 V / 135 Ah

Transmission

Hydrostatic travel drive with automatic adjustment of drawbar pull and speed. 4-wheel drive from reduction gear to front axle via cardan shaft to rear axle. Infinitely variable speed control forward and reverse

Travel speed 1st gear	max. 6 km/h
Travel speed 2nd gear	max. 20 km/h
Turning radius	7.0 m

Slewing gear

Hydrostatic drive with 2-stage planetary gear and axial piston fixed displacement motor also acts as wear-resistant brake. In addition automatically controlled spring-loaded multi-disc brake acting as parking brake

Swing speed	0–10 rpm
-------------	----------

Undercarriage

Front axle	Planetary drive axle with integrated drum brake. rigidly mounted. max. steering angle 30°
Rear axle	Oscillating planetary drive rear axle with integrated drum brake and selectable oscillating axle lock
Outrigger	4-point stabilizers or 2-point stabilizers with support blade
Tires	Solid rubber tires 8x 10.00-20
Service brake	Hydraulic single-circuit braking system acting on all wheel pairs (drum brakes)

Hydraulic system

Travel hydraulics	Closed circuit independent from working hydraulics
Pump capacity max.	180 l/min
Working pressure max.	420 bar
Working hydraulics: Axial piston variable displacement pump with load sensing. Coupled with a load independent flow distribution. Simultaneous independent control of all movements. Sensitive manoeuvres irrespective of loads.	
Pump capacity max.	190 l/min
Working pressure max.	330 bar
The thermostatically controlled oil circuit ensures that the oil temperature is promptly reached and avoids overheating. Return filter installed in oil tank allows eco-friendly replacement of filter elements.	
Double gear pump for all positioning and swing movements. Pressure cut-off valve for sensitive and energy saving movements.	
Pump capacity max.	76 + 38 l/min
Working pressure max.	230 bar
Hydraulic system	190 l

Cabin

Spacious, sound-insulated full vision steel cab (ROPS certified). Sliding window in cab door. Thermo windows tinted in green. Skylight thermo window bronze tinted. Large rear window. Front window supported by pneumatic springs. Lockable for ventilation and slidable under cab roof. Windshield washer system. Storage Compartment. Preparation for radio installation. Left hand outside rear-view mirror.

Cab heating with front window defroster by coolant heat exchanger with 3-stage fan. Fresh air and recirculating air filters.

Operator's seat MSG 85 (comfort version). Hydraulic damping. Extra high brackets. Tilt adjustable armrests. Longitudinal-horizontal suspension. Mechanical lumbar support. Safety belt.

Instrument panel on the right hand side of the operator's seat with visual warning device. Hour meter.

Working flood lights H3

Sound level values in compliance with EC directives

Specification subject to change without notice.

Equipment

Diesel engine	Standard	Option
Diesel particulate filter	●	
Exhaust gas turbocharger	●	
Intercooling	●	
Common rail injection	●	
Interface for engine diagnostics	●	
System-controlled fan drive	●	
Undercarriage		
4-point stabilizers*		●
2-point stabilizers and support blade*		●
Enlargement kit for support blade		●
Tires mudguard		●
All wheel drive	●	
Piston rod protection for stabilizer cylinders	●	
Protection kit for transmission shaft		●
Rear axle oscillating lock	●	
Drum brake	●	
Solid rubber tires 8× 10.00-20 (MAGNA)	●	
Tool box		●
Central grease nipple		●

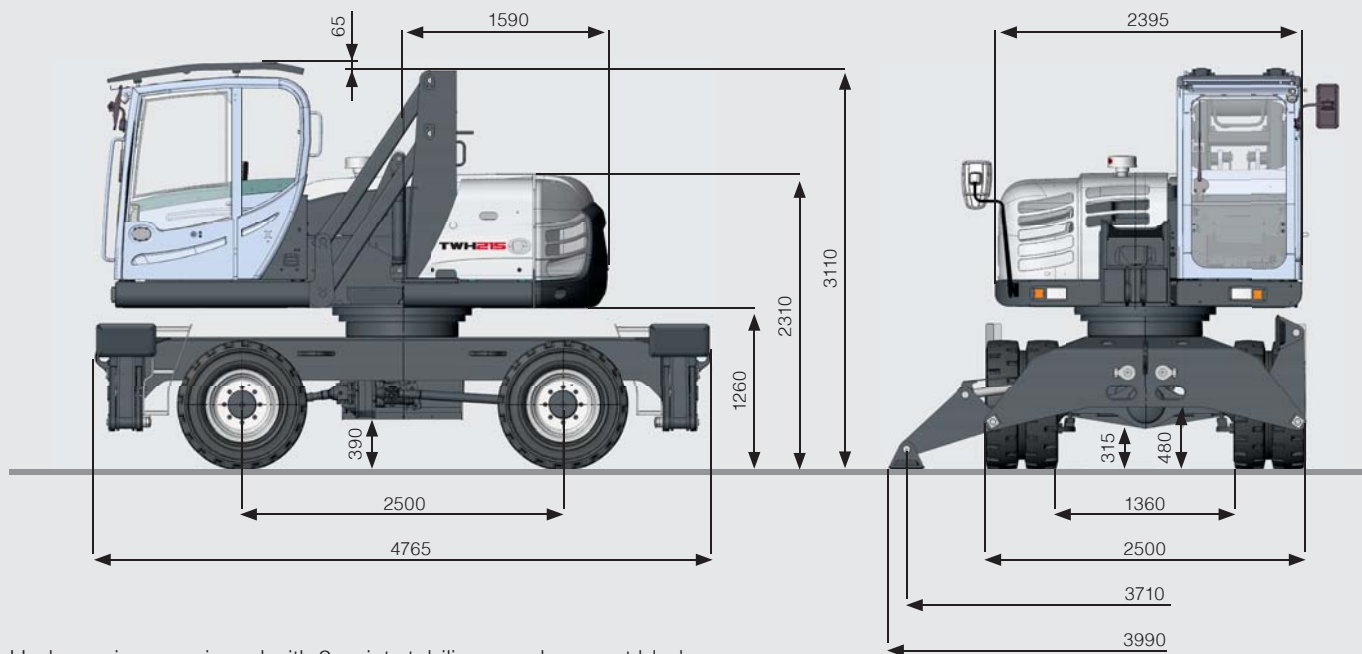
* no-additional-cost option
 Further optional equipment available on request!
 Specification subject to change without notice.

Uppercarriage	Standard	Option
Central grease nipple	●	
Reversible fan for radiator and hydraulic oil cooler	●	
Cyclone prefilter		●
Seperated cooling system (split radiator system)		●
Additional suction box for oil and water cooler		●
Cab		
Dust protection device for cabin		●
Preparation for radio installation	●	
Radio (CD/ USB)		●
Airconditioning		●
Hydraulically adjustable cabin (max. viewing height 5.2m)	●	
Joystick steering		●
Loading Equipment		
LED light packages		●
8.8 m multi purpose stick	●	
Assistance Systems		
Overload warning		●
Travel alarm		●
Rupture valves for boom and stick cylinder		●
Fire extinguisher		●
Rearview backup camera	●	

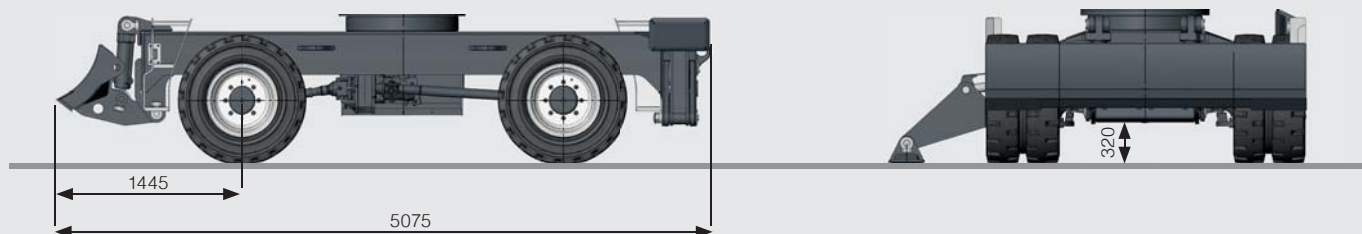
Dimensions

(all dimensions in mm)

Undercarriage equipped with 4-point stabilizers

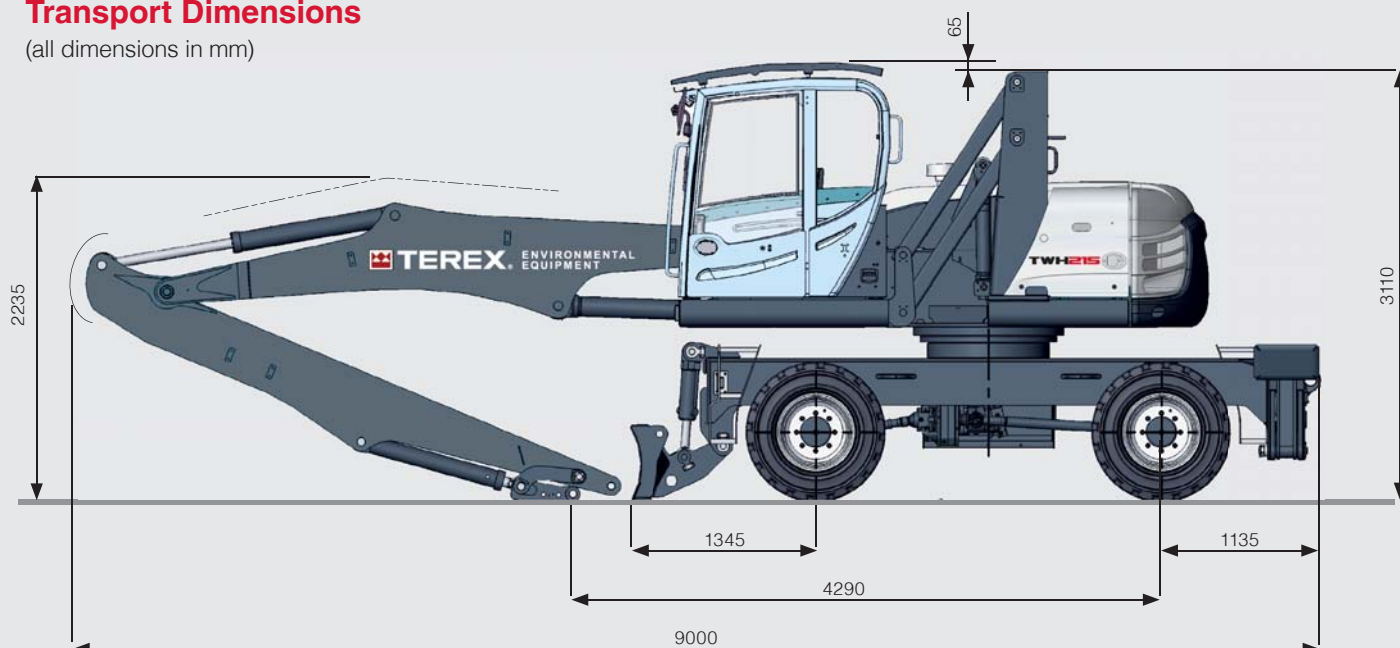


Undercarriage equipped with 2-point stabilizers and support blade



Transport Dimensions

(all dimensions in mm)



Working Ranges and Load Capacities

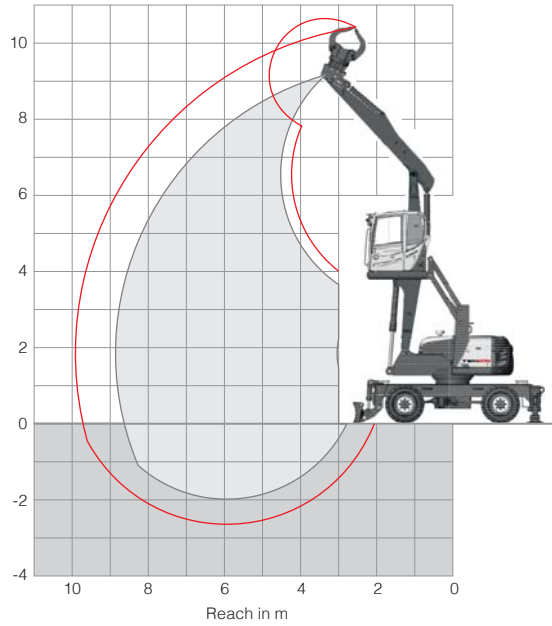
8.8 m reach with multi-purpose stick

Loading equipment

Boom: 4.7 m
 Multi-purpose stick: 3.5 m
 Sorting grab

Recommended attachments

Sorting grab up to 400 l
 Check the maximum operating pressure and oil flow of the attachment for compatibility



The lift capacity values are stated in metric tons (t). The pump pressure is 350 bar. In accordance with ISO 10567 the lift capacity values represents 75% of the static tipping loads or 87% of the hydraulic lifting force (marked °). On solid and level ground the values apply to a swing range of 360°. The (...) values apply in the longitudinal direction of the undercarriage. The values for "not supported" only apply via the steering axle or the locked oscillating axle. The weights of the attached load hoisting equipment (grab, load hook, etc.) must be deducted from the lift capacity values. The working load of the lifting device must be observed. In accordance with the EN 474-5 for object handling application hose rupture valves on the boom and stick cylinders, an overload warning device and the lift capacity table in the cab are required. For object handling application the machine has to be supported on a level ground.

Height [m]	Undercarriage stabilisation	Reach [m]			
		3	4.5	6	7.5
7.5	Without stabilizers		(2.3°)	(2.2°)	
	With 4-pt stabilizers		2.3° (2.3°)	2.2° (2.2°)	
	With 2-pt / support blade		2.3° (2.3°)	2.2° (2.2°)	
6	Without stabilizers		(2.2°)	(2.1°)	(1.6)
	With 4-pt stabilizers		2.2° (2.2°)	2.1° (2.1°)	1.8° (1.8°)
	With 2-pt / support blade		2.2° (2.2°)	2.1° (2.1°)	1.8° (1.8°)
4.5	Without stabilizers		(2.6°)	(2.3°)	(1.6)
	With 4-pt stabilizers		2.6° (2.6°)	2.3° (2.3°)	2.1° (2.1°)
	With 2-pt / support blade		2.6° (2.6°)	2.3° (2.3°)	2.1° (2.1°)
3	Without stabilizers	(6.0°)	(3.6)	(2.3)	(1.6)
	With 4-pt stabilizers	6.0° (6.0°)	3.6° (3.6°)	2.7° (2.7°)	2.2° (2.2°)
	With 2-pt / support blade	6.0° (6.0°)	3.6° (3.6°)	2.7° (2.7°)	2.2° (2.2°)
1.5	Without stabilizers		(3.2)	(2.1)	(1.5)
	With 4-pt stabilizers		4.7° (4.7°)	3.1° (3.1°)	2.4° (2.4°)
	With 2-pt / support blade		4.7° (4.7°)	3.0° (3.1°)	2.1° (2.4°)
0	Without stabilizers	(2.8°)	(3.0)	(2.0)	(1.4)
	With 4-pt stabilizers	2.8° (2.8°)	5.1° (5.1°)	3.4° (3.4°)	2.5° (2.5°)
	With 2-pt / support blade	2.8° (2.8°)	4.5° (5.1°)	2.9° (3.4°)	2.1° (2.5°)
-1.5	Without stabilizers		(2.9)	(1.9)	(1.4)
	With 4-pt stabilizers		4.9° (4.9°)	3.3° (3.3°)	2.3° (2.3°)
	With 2-pt / support blade		4.4° (4.9°)	2.8° (3.3°)	2.0° (2.3°)
		Max. reach 8.85 m			
1.85	Without stabilizers				(1.1)
	With 4-pt stabilizers				1.9° (1.9°)
	With 2-pt / support blade				1.7° (1.9°)