



TEREX®

ENVIRONMENTAL EQUIPMENT

TECHNICAL SPECIFICATIONS

Transport Dimensions

- Weight: 40.8 Tons (37,500kgs)
- Height: 13'-6" (4.12m)
- Width: 9'6" (2.9m)
- Length: (transport) 63'10" (19.46m)
- Length: (transport overall) 69'2" (21.12m)

Radial Conveyor

Hydraulic folding /180 degree slew
1200mm 48" wide 3 ply / plain belt
2 function remote (angle / radial)
Stockpile height: 17'10" (5.47m) @ 25°

1-Piece Collection Conveyor

59' (1500mm) wide 3 ply / plain belt

Feed / Hopper

Length: 15'1" (4.59m)
Hopper capacity: 13.4 yd³ (10.3m³)
Feed height: 10'10" (3.31m)

Trommel Drum

6x6 Panel / 30'7" x 7'7" (9.32m x 2.32m)
Screen area: 622 ft² (58.8m²)
4 Wheel, friction drive system, 0-18 rpm
Variable angle adjustment 4.5°- 6°

Tail Conveyor

Hydraulic folding
48" (1200mm) wide 3 ply / chevron
Stockpile height: 12'5" (3.97m) @ 25°

Options

- Tipping grid
- Vibrating grid
- Discharge chute
- Punch plate screens

Power Unit

Cat 6.6 Acert
129kW, 173@2200rpm
Diesel tank: 131 gal (597L)
Hydraulic tank: 158 gal (722L)

Feeder Conveyor

Width 59" (1500mm) 3 ply / plain belt
Proportional hydraulic load sensing
Variable speed control

Tri-Axle Wheel Bogie

Leaf spring suspension
385/65/R22 super singles
Airbrakes / steel mudguards



Phoenix Trommel 3300

Phoenix Trommel 3300

2-way Split Mobile Trommel Screen

SPECIFICATIONS

Operating Weight	32.27M (105'-8")
Hopper Capacity	10.3m ³ (13.4 ³ Yds)
Gross Engine Power	173 hp
Engine Type	Caterpillar 6.6 ACERT

FEATURES

Trommel Drum Size	9,315m x 2,315m (30'-7" x 7'-7")
Feed Conveyor	1,500mm (59") wide 3-ply plain belt
Collection Conveyor	1,500mm (59") wide 3-ply plain belt
Fines (Radial) Conveyor	1,200mm (48") wide 3-ply plain belt
Oversize (Tail) Conveyor	1,200mm (48") wide 2-ply chevron belt

DIMENSIONS

Width (Transport)	3m (9'-10")
Length (Transport overall)	21.13m (69'-2")
Width (Working)	15.79m (51'-9")
Length (Working)	32.27m (105'-8")
Height (Transport)	4.12m (13'-6")

Hopper

- ▶ Hopper Length:
- ▶ Hopper Capacity
- ▶ Feed in Height:

Phoenix Trommel 3300

4.59m (15'1")
10.3m³ (13.4 cu. Yds.)
3.31m (10'-10")

Trommel Drum

- ▶ Drum Size:
- ▶ Screening Area:
- ▶ Mesh:
- ▶ Wheels:
- ▶ Drive Motors:
- ▶ Angle:
- ▶ Variable Speed:
- ▶ Operation:

9.315m x 2.315m (30'-7" x 7'-7")
57.8m² (622.2ft²)
6 panels along length with 6 meshes per panel, bolted inside.
550mm (22") D x 305mm (12") W rubber tyre drive wheels.
Direct drive via 4 off White Hydraulics DT740-540 wheel drive motors.
Screening angle adjustable from 4.5 to 6 degrees.
Variable speed control adjustable to 18 rpm maximum.
Reversible operation to 'rock' barrel.

Feed Conveyor

- ▶ Belt:
- ▶ Speed Control:
- ▶ Hydraulic system:

1500mm (59") wide 3-ply plain belt.
Direct drive system
Proportional hydraulic load sensing & hydraulic variable speed control.

Collection Conveyor

- ▶ Belt:
- ▶ Drum:

1,500mm (59") wide 3-ply plain belt.
Twin drive conveyor drum.

Fines (Radial) Conveyor

- ▶ Belt:
- ▶ Folding:
- ▶ Rotation:
- ▶ Angle:
- ▶ System:
- ▶ Stockpile Height

1,200mm (48") wide 3-ply plain belt
Hydraulically folding
180 degree radial arc
Angle adjustment
2 function remote control system for radial and angle adjustment.
5.460m (17'-10") @ 25 degrees

Oversize (Tail) Converter

- ▶ Belt:
- ▶ Folding:
- ▶ Speed Control:
- ▶ Angle:
- ▶ Stockpile Height:

1,200mm (48") wide 2-ply chevron belt
Hydraulically folding
Variable speed control
Angle adjustment
3.79m (12'-5") @ 25 degrees

Powerunit & Hydraulics

- ▶ Engine Type:
- ▶ Flywheel pump:
- ▶ PTO pump:
- ▶ Feeder motors:
- ▶ Collection Conveyor Motor:
- ▶ Radial conveyor motor:
- ▶ Oversize conveyor motor:
- ▶ Trommel drum motors:

CAT 6.6 ACERT developing 173 hp @ 2200 rpm
Cast iron triple pump 85cc/45cc/45cc per rev
Cast iron tandem pump 29cc/rev each circuit
Cast iron motor (200cc/rev)
Cast iron motor (630cc/rev)
Cast iron motor (500cc/rev)
Cast iron motor (500cc/rev)
Cast iron motor (540cc/rev)

Tank Capacities

- ▶ Hydraulic tank:
- ▶ Diesel tank:

722 L (158.8 Gal)
597 L (131 Gal)

Road Transport

- ▶ Wheels:
- ▶ Axle:
- ▶ Suspension:
- ▶ Brakes:
- ▶ Mudguards:
- ▶ Lights:

385/65/R22 super single wheels
Approved breaking tri axle
Leaf spring suspension
Air brakes
Steel
Standard

Options

- ▶ Tipping Grid
- ▶ Discharge Chute
- ▶ Vibrating grid, single or double deck.
- ▶ Punch plate screens
- ▶ ABS Brakes
- ▶ TUV Spec
- ▶ Electric hydraulic powerunit

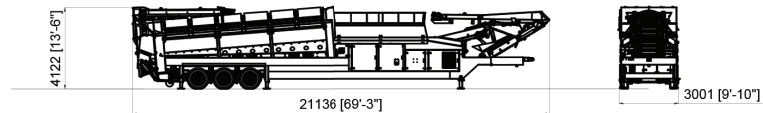
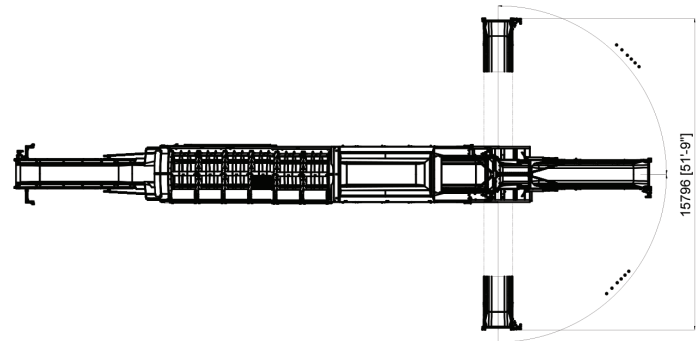
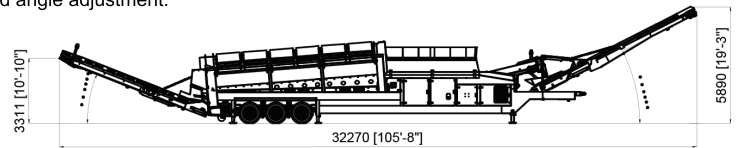
Applications

- ▶ Topsoil
- ▶ Recycling
- ▶ Wood Chippings
- ▶ Compost



TEREX®

Phoenix Trommel 3300



www.terex.com/environmental-equipment

Product specifications and prices are subject to change without notice or obligation. The photographs and/or drawings in this document are for illustrative purposes only. Refer to the appropriate Operator's Manual for instructions on the proper use of this equipment. Failure to follow the appropriate Operator's Manual when using our equipment or to otherwise act irresponsibly may result in serious injury or death. The only warranty applicable to our equipment is the standard written warranty applicable to the particular product and sale and Terex makes no other warranty, express or implied. Products and services listed may be trademarks, service marks or trade-names of Terex Corporation and/or its subsidiaries in the USA and other countries. All rights are reserved. Terex is a registered trademark of Terex Corporation in the USA and many other countries.

© 2013 Terex Corporation.
Terex Environmental Equipment - 1250 Commerce Drive - Farwell, MI 48622 USA
Tel +1 (989) 588-4295 - salesenvironmental@terex.com

WORKS FOR YOU.™